

A photograph of strawberry plants growing in a field. The plants have green leaves and red stems. Several ripe, red strawberries are visible, some hanging from the stems. The background is a dark, textured surface, possibly black plastic mulch.

# **Rowan County Working Ag Lands Plan**

**Rowan County Agriculture Advisory Committee  
Lois Britt Agribusiness Center, University of Mount Olive  
NC Department of Agriculture Development and  
Farmland Preservation Trust Fund (ADFPT)**

A green John Deere combine harvester is shown in a field, likely harvesting grain. The harvester is green with yellow accents and is positioned on the left side of the frame. The background shows a line of trees under a cloudy sky.

# Agriculture in Rowan County

The Agriculture sector accounts for 13.8 % of Rowan County's total employment

Agriculture and agribusiness contributed to \$82 million in Rowan County's income

Rowan is ranked 19<sup>th</sup> in the state for wheat production

Rowan is ranked 8<sup>th</sup> in the state for cattle production

Rowan is ranked 4<sup>th</sup> in the state for sheep and goats

Rowan is ranked 4<sup>th</sup> in the state for dairy production

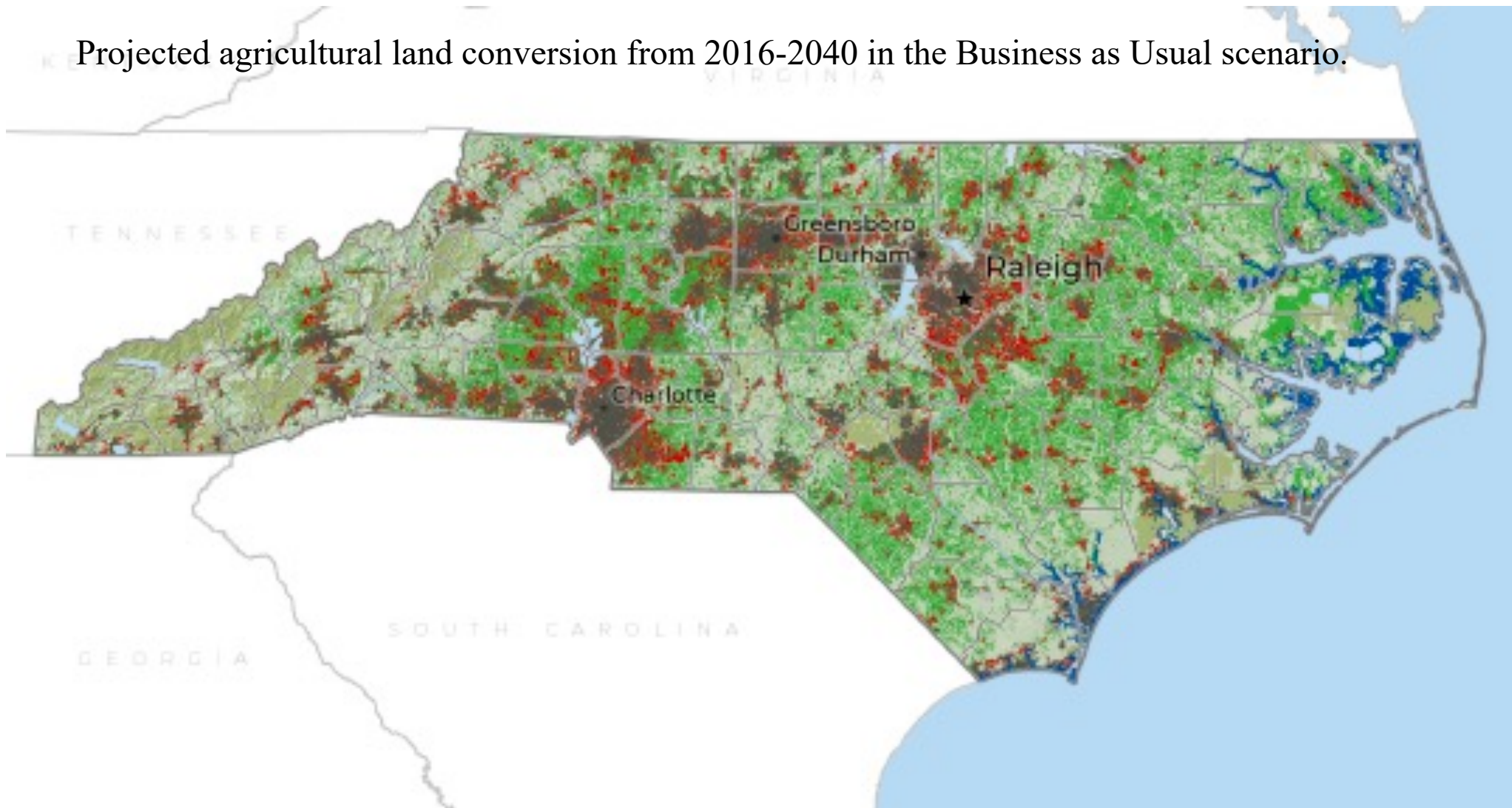
Rowan is ranked 4<sup>th</sup> in the state for strawberry production

Rowan is ranked 2<sup>nd</sup> in the state for tomato production



# Farms Under Threat in North Carolina

Projected agricultural land conversion from 2016-2040 in the Business as Usual scenario.



## Projected Conversion and Flooding (2040)

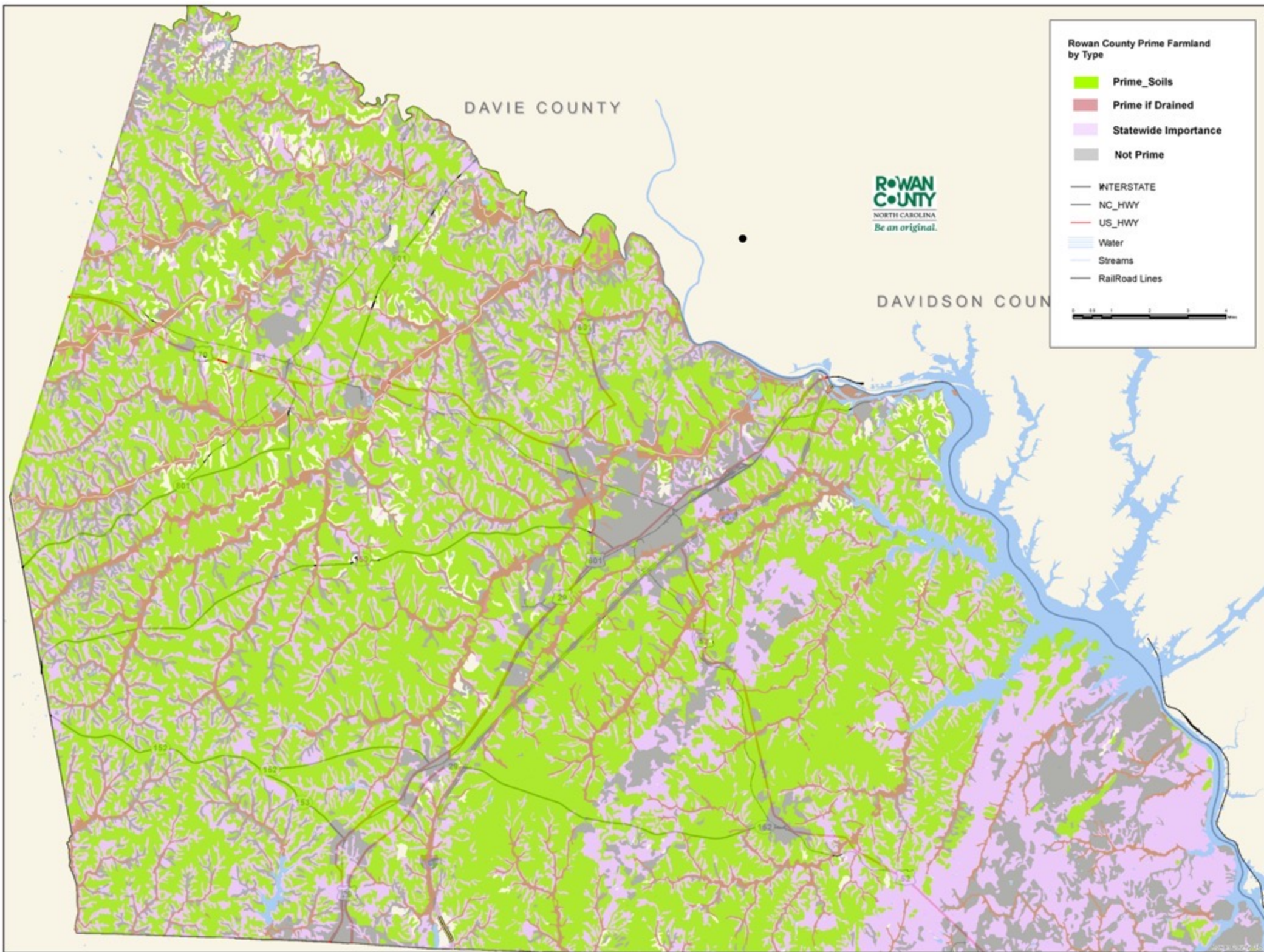
- Urban and highly developed (UHD) and low-density residential (LDR)
- Coastal flooding

## Land Cover (2016)

- Farmland\*
- Forestland
- Federal (no grazing)
- Other lands
- Urban areas
- Water

*\*Farmland is composed of cropland, pastureland, and woodland associated with farms.*







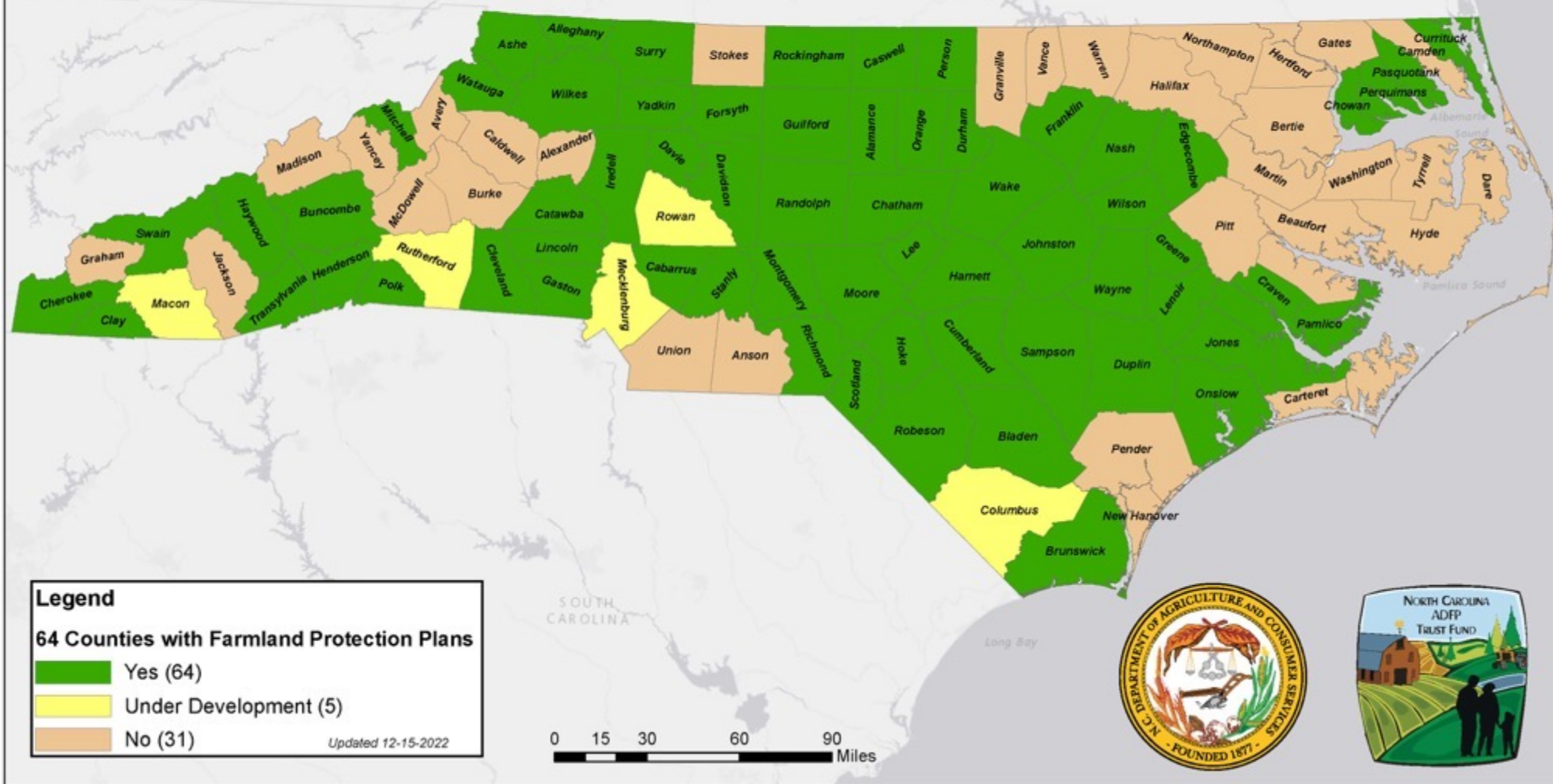
Population Growth (in thousands)



Population in Rowan County has increased by 7.1% from 2010-2021



# FARMLAND PROTECTION PLANS





# Are you a Resident or Farmer of Rowan County?

## TAKE OUR SURVEY!



Rowan County Non-  
Farm Resident  
Survey

Take this survey if you are a  
resident of Rowan County  
and do NOT live on a farm.



Rowan County  
Agricultural  
Producers Survey

Take this survey if you are an  
Agricultural Producer in  
Rowan County.



Rowan County  
Agricultural  
Business Survey

Take this survey if you are  
an Agricultural Business in  
Rowan County.





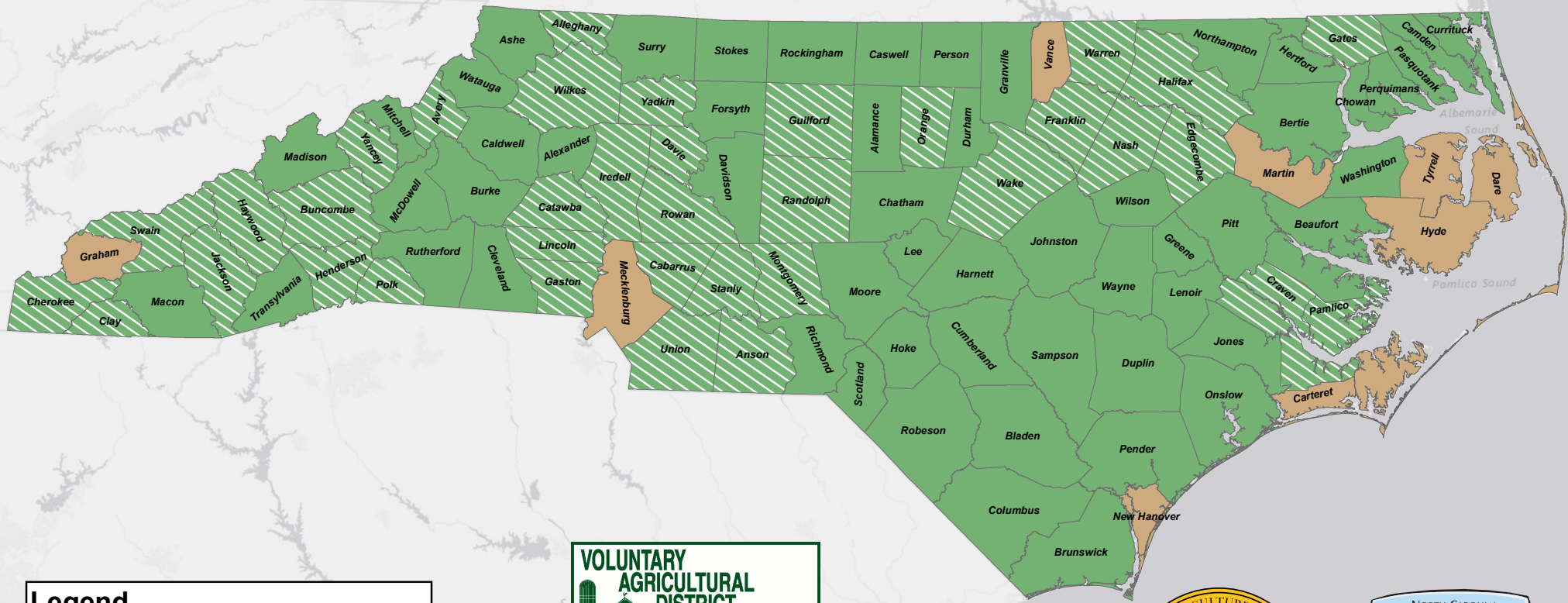
# Recommendations

1. Support measures to protect and promote working forest and farmland in Rowan County.
2. Educate Landowners on the benefits of enrolling in Conservation Easement Programs to keep land available for agricultural use
3. Expand Voluntary Agricultural District (VAD) and Enhanced Voluntary Agricultural District (EVAD) Programs






# VOLUNTARY AGRICULTURAL DISTRICTS



## Legend

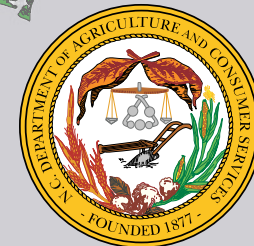
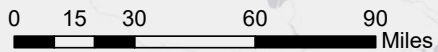
## 91 Counties with VAD Programs

VAD Programs (55)

 VAD and Enhanced VAD Programs (36)

None (9)
----------

Updated 12-15-2022







# Recommendations Cont.

4. Develop and conduct programs to assist Rowan County farm and forest landowners with farm transition planning
5. Promote appreciation and awareness of the benefits of agriculture to Rowan elected officials and citizens.
6. Expand and support youth agricultural educational programs.







# ROWAN AGRICULTURE ADVISORY BOARD

KIM STARNES CHAIR TERM ENDS 1/31/2025

MORGAN MOSHER V. CHAIR TERM ENDS 12/31/2026

MICHAEL SHEPHERD TERM ENDS 1/31/2023

BEN KNOX TERM ENDS 5/31/2023

SUZANNE RAMSEY TERM ENDS 4/30/2024

CHRIS SLOOP \*SOIL & WATER REP LIFE TERM

JASON WALKER \*NC FOREST SERVICE REP LIFE TERM

Members are appointed by the Rowan BOC and cannot serve more  
than 2 consecutive 3 year terms