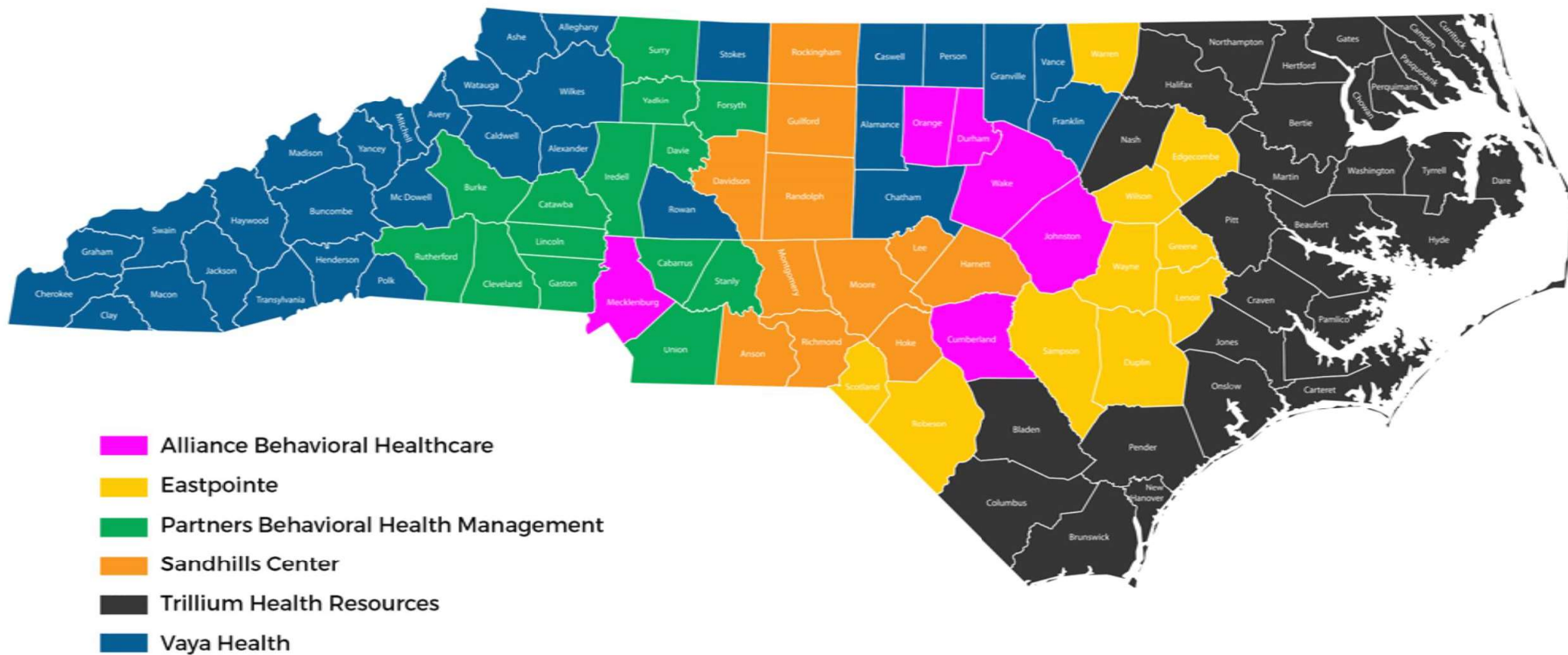


Rowan County Board of Commissioners

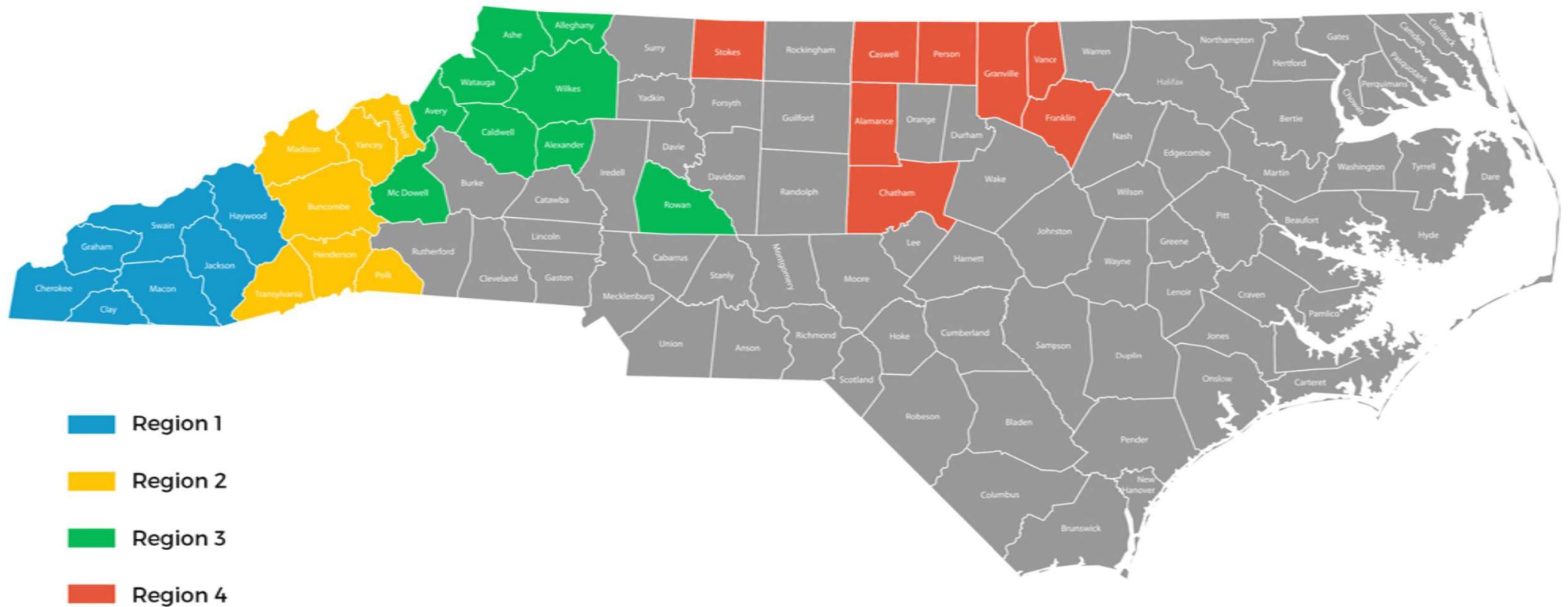
May 16th, 2022

Zack Shepherd, Community Relations Regional Director

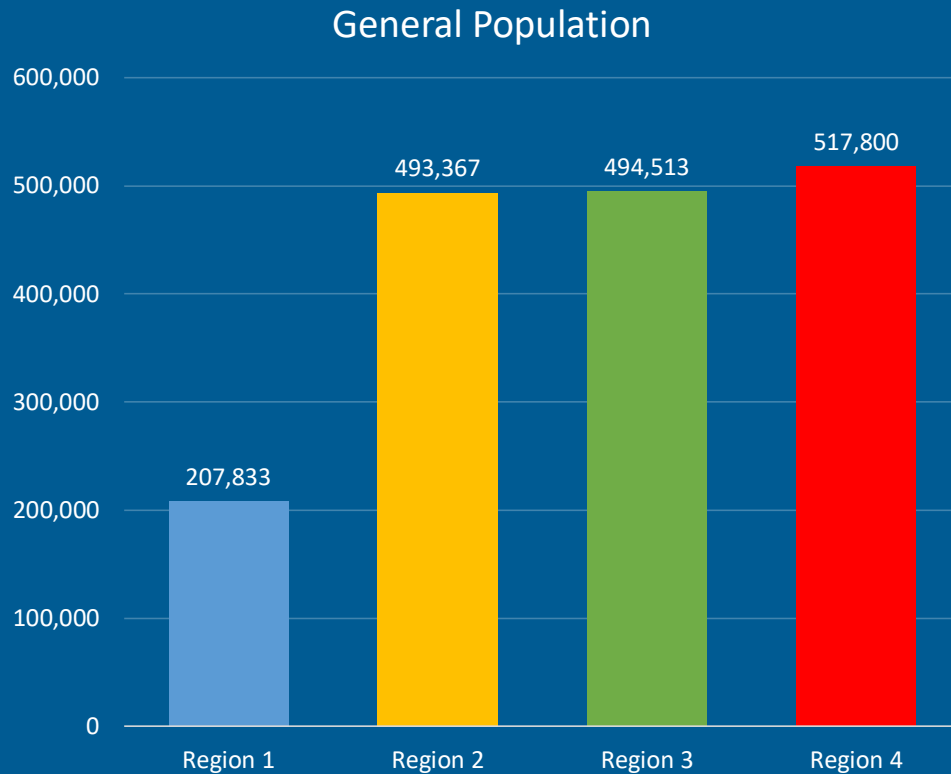
LME/MCO County Alignments



Vaya's Regional Assignments



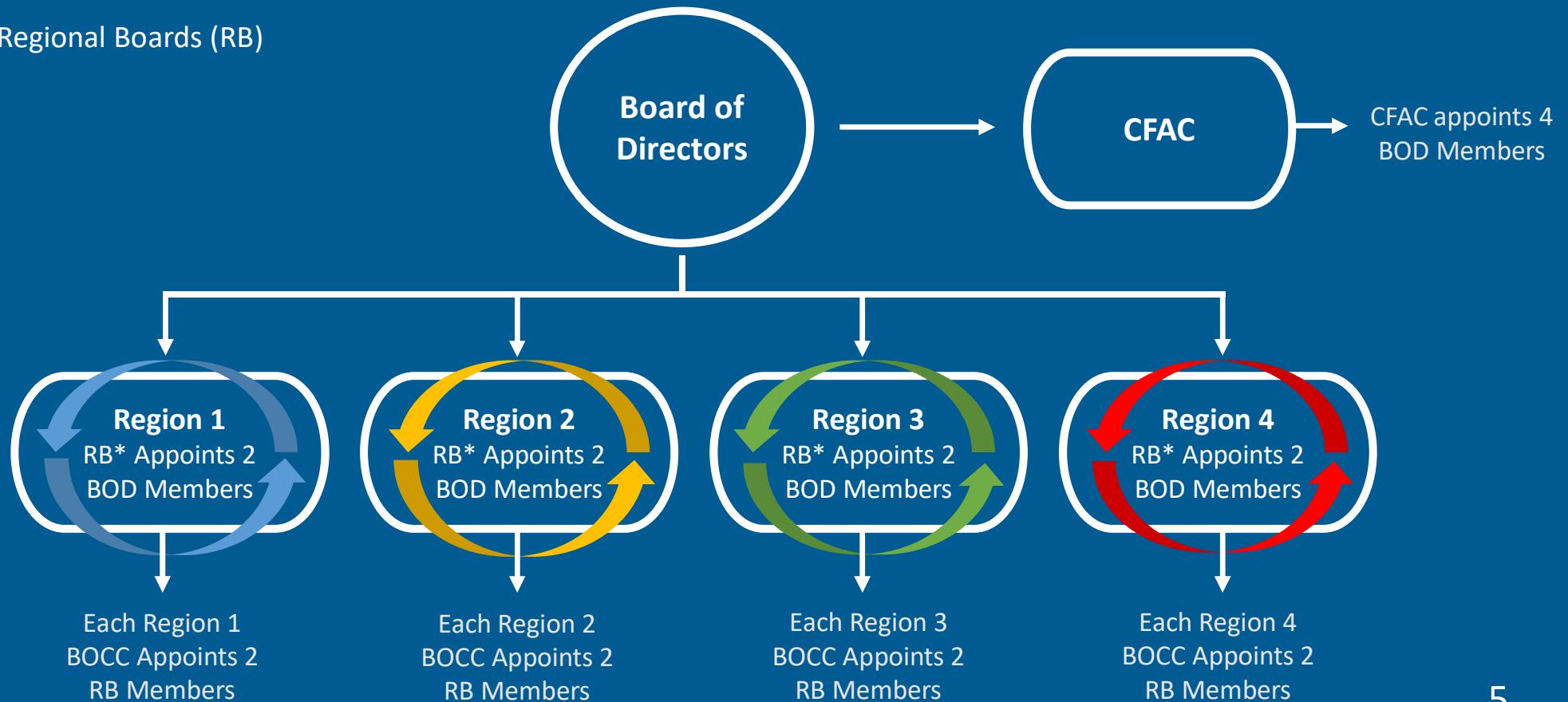
Regional Boards



Region 1	Region 2
<ol style="list-style-type: none"> Cherokee Clay Graham Haywood Jackson Macon Swain 	<ol style="list-style-type: none"> Buncombe Henderson Madison Mitchell Polk Transylvania Yancey
Region 3	Region 4
<ol style="list-style-type: none"> Alexander Alleghany Ashe Avery Caldwell McDowell Watauga Wilkes Rowan 	<ol style="list-style-type: none"> Stokes Alamance Caswell Chatham Person Franklin Granville Vance

Alternative Board Structure

*Regional Boards (RB)



Composition for Consolidated Board of Directors

- 2 representatives appointed by each Regional Board
- 4 representatives appointed by Consumer & Family Advisory Committee- One per region
- 1 representative appointed by the DHHS Secretary
- Up to 8 At-Large members appointed by current Vaya Board in consultation with Cardinal Board, CCABs, counties
- The Provider Advisory Council President serves as non-voting member
- Up to 3 non-voting advisory members

Regional Board: Region 3 Membership

	County	Position	Name
1	Alexander	County Manager	Rick French
2	Alexander	Commissioner	Ronnie Reese
3	Alleghany	Commissioner	Mechelle Luffman
4	Alleghany	DSS Director	Lisa Osborne
5	Ashe	Commissioner	Todd McNeill
6	Ashe	County Manager	Adam Stumb
7	Avery	County Manager	Phillip Barrier
8	Avery	Commissioner	Tim Phillips
9	Caldwell	Commissioner	Mike Labrose
10	Caldwell	DSS Director	Will Wakefield
11	McDowell	Commissioner	Chris Allison
12	McDowell	County Manager	Ashley Wooten
13	Rowan	Commissioner	Mike Caskey
14	Rowan	Commissioner	Judy Klusman, Vice Chair
15	Watauga	Commissioner	Billy Kennedy, Chair
16	Watauga	Commissioner	Charlie Wallin
17	Wilkes	DSS Director	John Blevins
18	Wilkes	Commissioner	Brian Minton

Board of Directors Membership

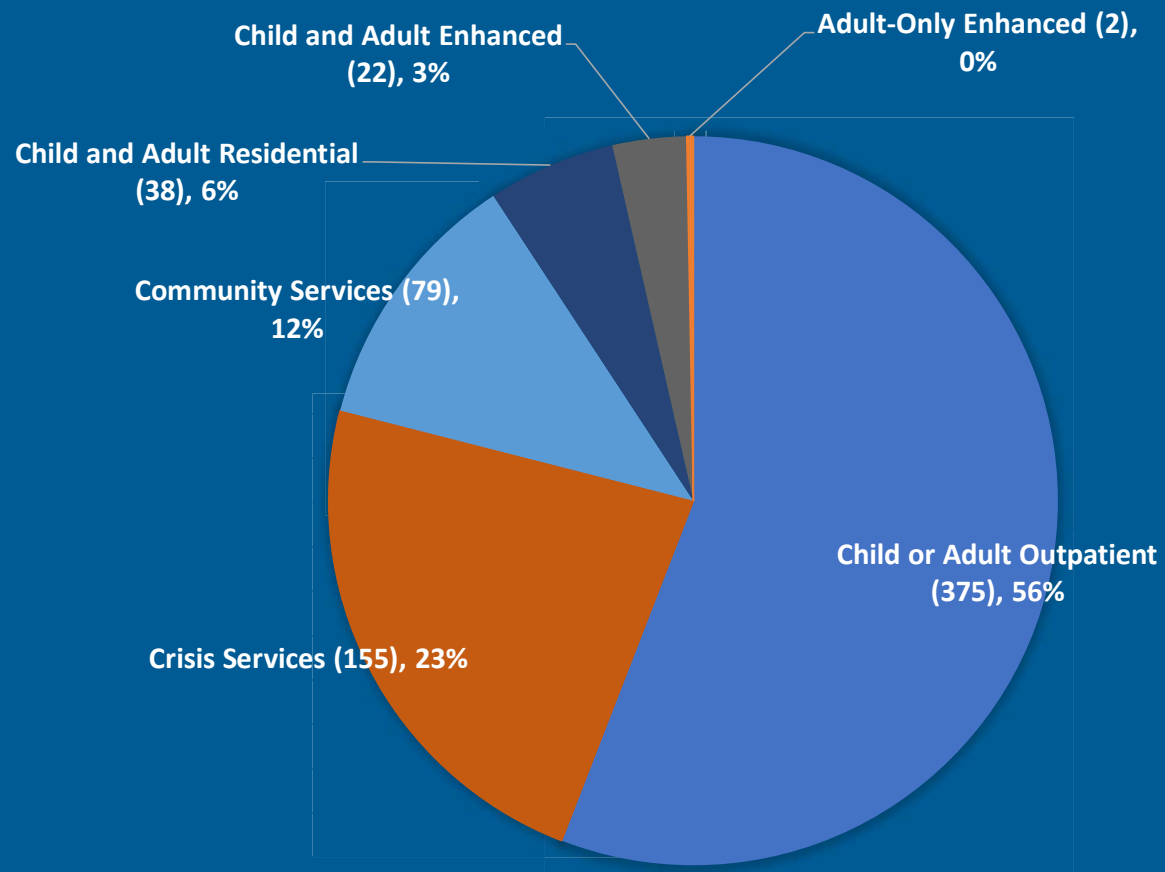
	Seat	Region	County	Position	Name
1	RB1 – Chair	1	Macon	Commissioner	Ronnie Beale
2	RB1 – Vice Chair	1	Haywood	HHS Director	Ira Dove
3	RB2 – Chair	2	Henderson	Commissioner	Bill Lapsley
4	RB2 – Vice Chair	2	Mitchell	Commissioner	Brandon Pittman
5	RB3 – Chair	3	Watauga	Commissioner	Billy Kennedy
6	RB3 – Vice Chair	3	Rowan	Commissioner	Judy Klusman
7	RB4 – Chair	4	Vance	Commissioner	Dan Brummitt
8	RB4 – Vice Chair	4	Franklin	Commissioner	Cedric Jones
9	CFAC Region 1	1	N/A	N/A	Mary Ann Widenhouse
10	CFAC Region 2	2	N/A	N/A	Nancy Baker
11	CFAC Region 3	3	N/A	N/A	Pat McGinnis
12	CFAC Region 4	4	N/A	N/A	Benita Purcell
13	At-Large 1	3	Alexander	County Manager	Rick French
14	At-Large 2		N/A	Insurance Expertise	Mike Norris
15	At-Large 3		N/A	Health Care Expertise	Tim Fitzsimons
16	At-Large 4	4	Alamance	Commissioner	John Paisley
17	At-Large 5	2	Buncombe	Assistant County Manager	Dakisha “DK” Wesley
18	At-Large 6	3	McDowell	County Manager	Ashley Wooten
19	PAC President		N/A	PAC President	Carson Ojamaa
20	DHHS Secretary Appointment	2	Transylvania	N/A	Page Lemel *DHHS Approval Pending*
21	Specialized Expertise		N/A	DSS Director	Patrick Betancourt

Data Review

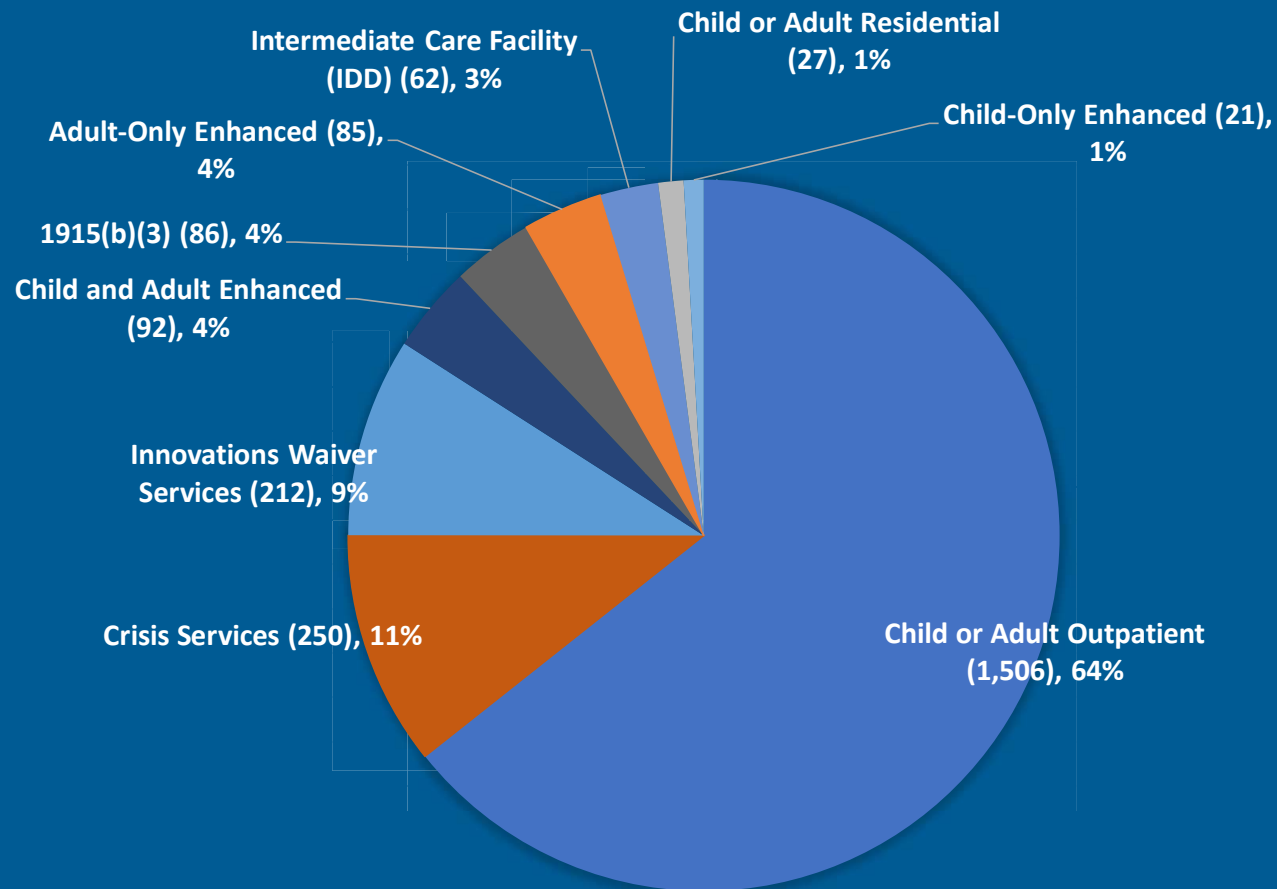
Highlights

- Over half of members served in Rowan County between October and December 2021 with Medicaid services received child or adult outpatient services (64%).
- Like those with Medicaid funding, over half of members served in Rowan County between October and December 2021 with non-Medicaid services received child or adult outpatient services (56%).
- As of March 2022, there were 249 members with Rowan County funding that received Care Management through Vaya.

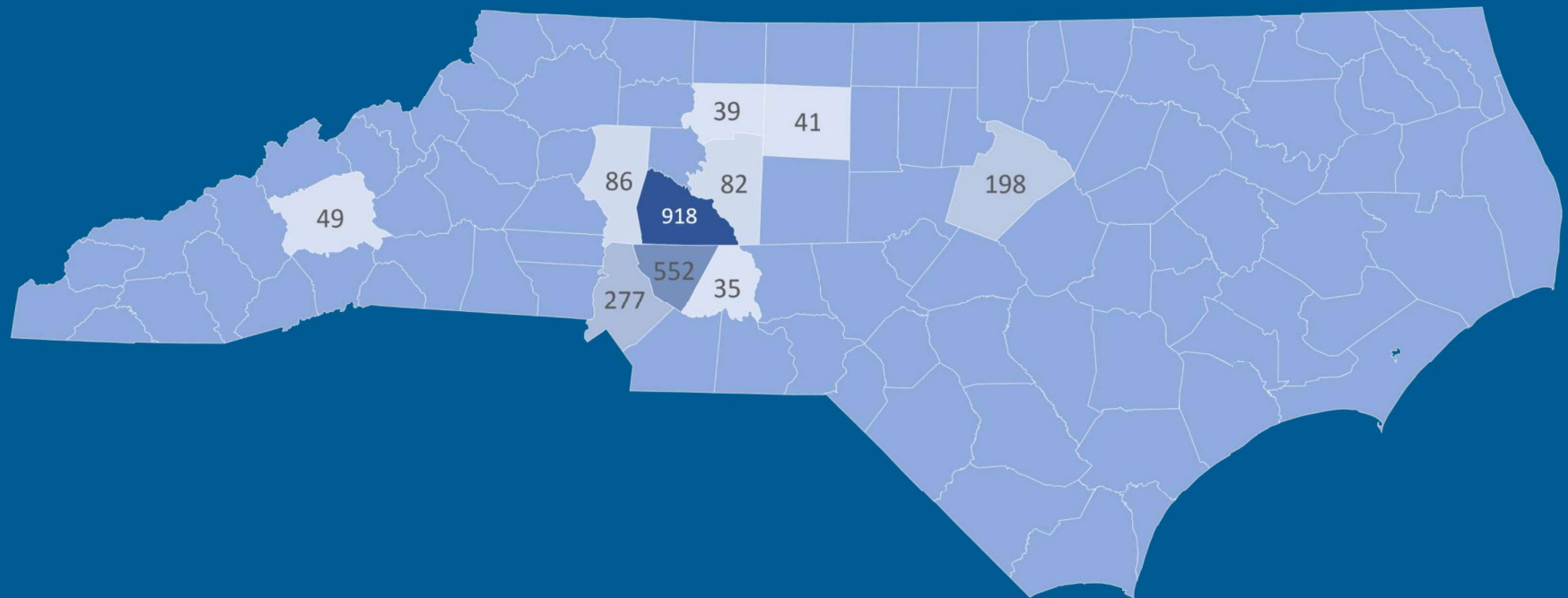
Non-Medicaid Service Usage Oct – Dec 2021



Medicaid Service Usage Oct – Dec 2021

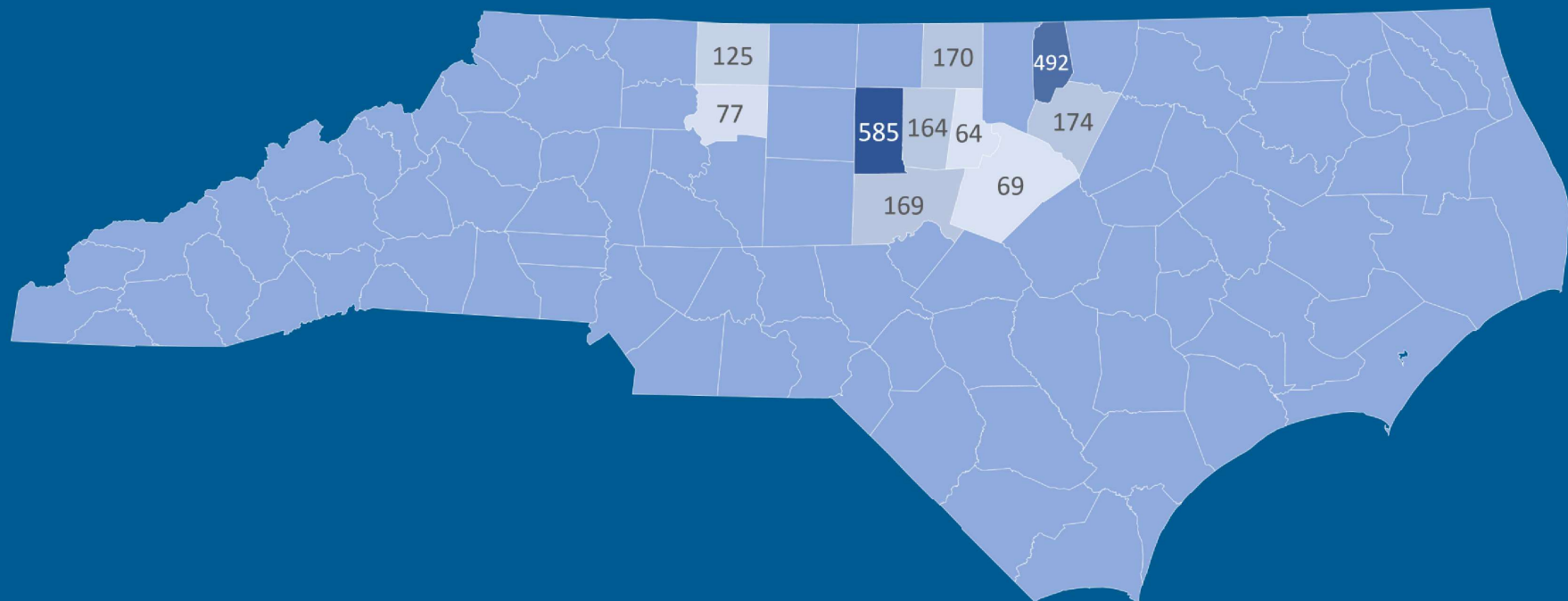


Top Locations Where Medicaid Members Receive Services Oct – Dec 2021



Powered by Bing
© GeoNames, TomTom

Top Locations Where Non-Medicaid Members Receive Services Oct – Dec 2021



Powered by Bing
© GeoNames, TomTom

